

select deluxe homes

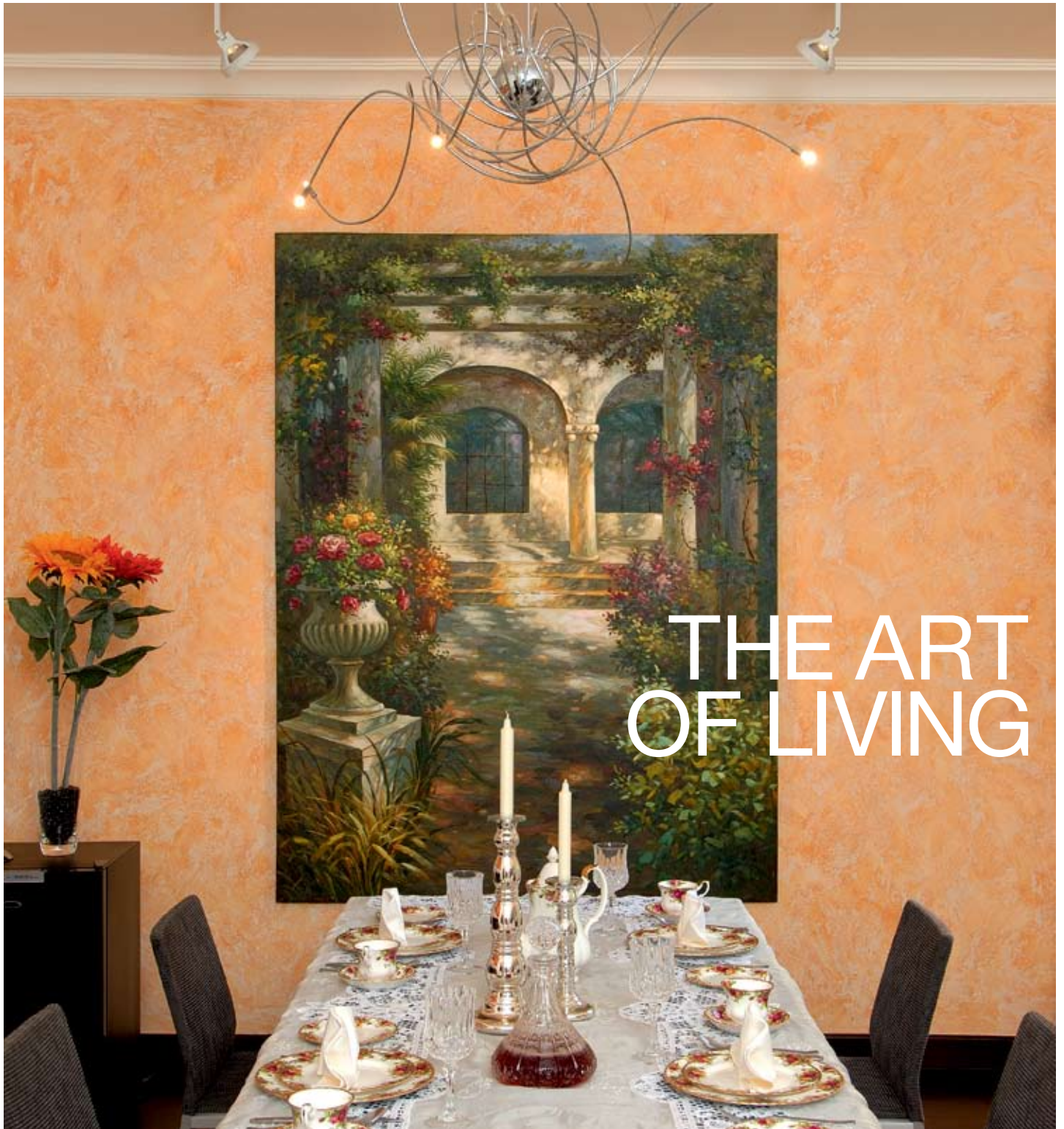
The Key

大宅®

JULY 2009
Volume 57

published and distributed by

LANDSCOPE 領域®
The Specialists in Luxury Properties



THE ART OF LIVING

www.landscape.com



KeyNotes

"Have the courage to be ignorant of a great number of things, in order to avoid the calamity of being ignorant of everything."

Sydney Smith

The unexpected strong buying spree is fuelled by the bullish stock market, the influx of hot money and easy mortgage packages. Both primary and secondary markets have seen significantly increased sales. In the luxury property sector, the price jump is even more astonishing. The current prices in Southside, The Peak and Midlevels have returned to their pre-tsunami levels, as if no financial turmoil had happened. It is not uncommon these days that the final sale price is higher than the seller's asking price. In some transactions, the price is back to their mid 2008 level. Many an attractive listings have several contenders that some sellers cancelled the first sale for a high second offer by returning the first buyer's deposit with compensation. Property agents cannot be sure of the completion of a deal until it is actually completed. Confirmed sales have more than doubled as if we were back to the speculative era of 1996-97.

Koh Keng-shing
ks-koh@landscape.com

(The above are an excerpt from Market Watch on www.landscape.com. For the full article, please log on to www.landscape.com/m0709.htm)

About The Key

The Key is a monthly publication of sales and letting listings of luxury residential properties on Hong Kong Island. It is sent to VIP clients of Landscape Realty and residents of The Peak, Southside, Mid-Levels, Kowloon Tong, Homantin and selected upmarket residential areas in Shatin, Tai Po, Clear Water Bay and Castle Peak Road. The recipients comprise the crème de la crème of Hong Kong's affluent community.

In addition to The Key, Landscape Realty sends weekly eNewsletters to clients on most update listings of luxury properties. If you wish to receive the eNewsletter, please call Loretta Lui at 3102 4818 or email to info@landscape.com.

How may you list your property with The Key?

If you would like to see your property listed in The Key in the next issue, you may call Loretta Lui at 3102 4818 or email to info@landscape.com. Or you may simply fill out the space below and fax to us at 2866 0015.

Property to be listed

Asking Rental / Sale Price

Floor Area

Contact Person

Telephone

Email

Our KeyPersons will contact you for follow-up works.

SOUTHSIDE SALES

南區
出售



YY Mansion

薄扶林 裕仁大廈

96 Pokfulam Road, Pokfulam
Practical 3-bedroom apartment in quiet Pokfulam
薄扶林實用三房住宅，環境清幽怡人

1,450 s.f.
\$9,250,000

www.landscape.com/19536.htm | Mira To 杜小姐 9486 1566



Albany Court

薄扶林 雅鑾閣

51-53 Bisney Road, Pokfulam
Lofty-ceilinged low-rise flat with terrace in tranquil Pokfulam
薄扶林低密度住宅連平台，樓底極高

1,800 s.f. (plus 521 s.f. terrace)
\$18,000,000

www.landscape.com/19599.htm | Rowena Siu 蕭小姐 9348 4118

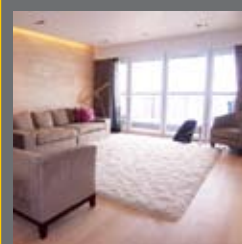


98 Repulse Bay Road, Repulse Bay

淺水灣 淺水灣道98號
Sea view low-rise apartment close to Repulse Bay Beach
低密度海景住宅，鄰近淺水灣海灘

1,800 s.f.
\$18,300,000

www.landscape.com/19559.htm | Stella Lo 羅小姐 9809 8570



Baguio Villa

薄扶林 碧瑤灣

550-555 Victoria Road, Pokfulam
4-bedroom sea view flat with spacious layout and nice decor
四房海景單位連雅緻裝修，間隔實用，可租可售

2,688 s.f.
\$25,000,000 also for lease \$95,000 incl.

www.landscape.com/19315.htm | Christine Chong 莊小姐 9648 6082



Repulse Bay Garden

淺水灣 麗景園

18-40 Belleview Drive, Repulse Bay
High efficiency apartment with nice and tasteful decorations
間隔實用住宅，連品味雅緻裝修

2,288 s.f.
\$26,000,000

www.landscape.com/19341.htm | Teresa Lau 劉小姐 9080 6686



La Mer

薄扶林 浪頌居

67-71 Bisney Road, Pokfulam
Modern low-rise apartment with garden and super sea view
新穎低密度單位連花園及無敵海景

2,174 s.f. (plus 774 s.f. terrace)
\$28,000,000

www.landscape.com/17233.htm | Rowena Siu 蕭小姐 9348 4118



THE ART OF LIVING

Nestled in a quiet corner off Island Road in Deep Water Bay, this brown brick-clad boutique estate consists of townhouses and luxury apartments. The property is a 1,634 square feet apartment at the back of the estate, looking over the swimming pool and its landscaped garden. Once inside the property, one is greeted by a star-lit, cantilevered ceiling from behind the television on the wall in the living room, which sets the dramatic tone of the property. Art lovers must not miss the huge European garden painting gracing the dining room, over which hangs a state-of-the-art chandelier. The scene alone will wet your appetite, for food and for art. A true manifest of the art of living.

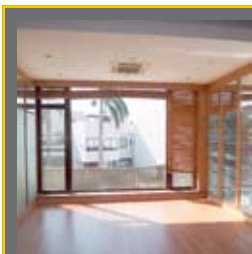


45 Island Road,
Deep Water Bay
深水灣 香島道45號

1,634 s.f.
\$29,000,000

www.landscape.com/19583.htm

Christine Chong 莊小姐 9648 6082



Villa Helvetia

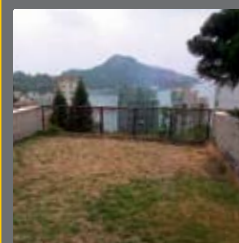
淺水灣 雲濤別墅

69 Repulse Bay Road, Repulse Bay
Rare find cozy colonial low-rise apartment
in prime location
罕有精緻英式低密度住宅，位處尊貴地段

2,200 s.f.
\$30,000,000

www.landscape.com/18355.htm

Eric Wong 黃先生 9740 3396



Carmel Hill 赤柱 海明山

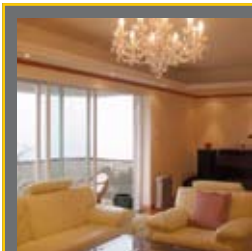
12 Carmel Road, Stanley

Nicely fitted and equipped garden house
with sweeping sea view
良好配置花園大屋尊享廣闊海景

2,378 s.f.
(plus 262 s.f. terrace and 381 s.f. garden)
\$32,000,000

www.landscape.com/14431.htm

Mary Li 李小姐 9011 6595



Woodbury Court

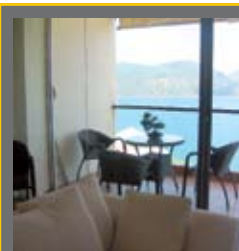
薄扶林 嘉林閣

137 Pokfulam Road, Pokfulam
Practical duplex with balconies and
peaceful sea view
間隔實用複式單位，連陽臺及優美海景

2,895 s.f.
\$32,000,000

www.landscape.com/14474.htm

Mira To 杜小姐 9486 1566



Faber Court

大潭 輝百閣

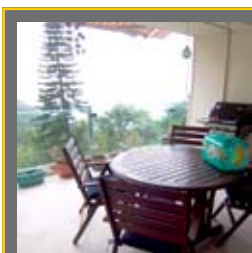
29-31 Tai Tam Road, Tai Tam

Full sea view 4-bedroom apartment on Tai
Tam waterfront
大潭海濱全海景四房單位，可租可售

2,250 s.f.
\$33,000,000 also for lease \$75,000 incl.

www.landscape.com/19487.htm

Christine Chong 莊小姐 9648 6082



Sea Cliff Mansions

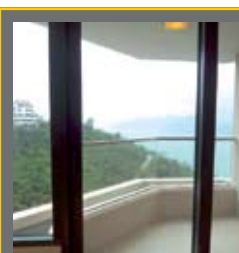
淺水灣 海峰園

19A-19D Repulse Bay Road, Repulse Bay
Well decorated sea view flat with huge
balcony on upper Repulse Bay Road
淺水灣道頭段雅緻裝修海景住宅連巨型陽臺

2,400 s.f.
\$35,000,000

www.landscape.com/18741.htm

Sami Woo 胡小姐 9493 8275



Belgravia 淺水灣 南灣道57號

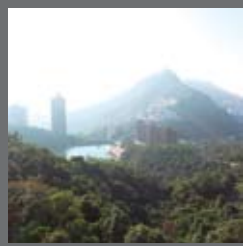
57 South Bay Road, Repulse Bay
Superbly renovated sea view apartment
with full clubhouse facilities sale with
tenancy, investments's choice
華麗裝修海景住宅連完善住客會所設施，連租約售，
投資首選

2,390 s.f.
\$39,500,000 SOLE AGENT 獨家代理

www.landscape.com/18704.htm

Yvonne Chang 鄭小姐 9088 4666

SOUTHSIDE SALES



Hong Kong Parkview - Tower 15 淺水灣 陽明山莊15座

88 Tai Tam Reservoir Road, Repulse Bay
3-ensuite apartment with both harbour view and Southside sea view
三套房住宅，尊享維港及南區海景
2,611 s.f.
\$44,000,000

www.landscape.com/14346.htm

Mary Li 李小姐 9011 6595



Radcliffe

薄扶林 靖林

120 Pokfulam Road, Pokfulam
Brand new 4-ensuite duplex with full clubhouse facilities
全新四套房住宅連完善住客會所設施
3,620 s.f.
\$49,489,000

www.landscape.com/10852.htm

Eric Wong 黃先生 9740 3396

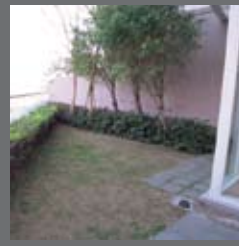


Residence Bel-Air (Phase 2) 薄扶林 貝沙灣二期

38 Bel-Air Avenue, Pokfulam
Luxurious sea view apartment with superb designer decorations
豪華海景住宅配以一流設計師精心設計裝修
3,358 s.f.
\$55,000,000

www.landscape.com/19556.htm

Teresa Fung 馮小姐 9138 1621

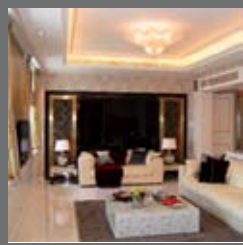


33 Cape Road, Chung Hom Kok 春坎角 環角道33號

Boutique 3-bedroom townhouse with sea view in quiet location
精緻三房排屋連海景，環境寧靜
3,230 s.f.
(plus 420 s.f. roof and 564 s.f. garden)
\$55,700,000

www.landscape.com/18311.htm

Sissy Li 李小姐 9642 6969



37 Repulse Bay Road, Repulse Bay

淺水灣 淺水灣道 37號
Designer decorated duplex with picturesque sea view
設計師精心設計複式海景住宅，可租可售
3,480 s.f.
\$58,000,000 also for lease \$150,000 incl.

www.landscape.com/17105.htm

Maria Cheung 張小姐 5182 8699



Redhill Park

大潭 紅山花園

12 Pak Pat Shan Road, Tai Tam
Sea view townhouse with spacious private garden and terrace
大潭海景排屋連寬敞私家花園及平台
3,608 s.f. (plus 1,342 s.f. garden)
\$58,000,000

www.landscape.com/18421.htm

Mark Mak 麥先生 6838 2929



56 Repulse Bay Road, Repulse Bay

淺水灣 淺水灣道56號
Luxuriously decorated duplex with lovely Repulse Bay sea view
華麗裝修複式住宅，享迷人淺水灣海景
3,279 s.f.
\$82,000,000

www.landscape.com/17128.htm

Stella Lo 羅小姐 9809 8570



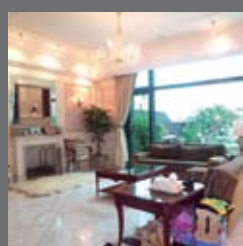
The Beachfront

淺水灣 壁池

7 Belleview Drive, Repulse Bay
Repulse Bay townhouse with picturesque views
淺水灣排屋享如畫美景
3,047 s.f. (plus 413 s.f. terrace)
\$85,000,000

www.landscape.com/14459.htm

David Leung 梁先生 9199 0672



Le Palais

大潭 皇府灣

8 Pak Pat Shan Road, Tai Tam
Waterfront garden residence with comprehensive facilities
海濱花園住宅連完善住客會所設施
4,372 s.f. (plus 787 s.f. garden)
\$85,000,000

www.landscape.com/19539.htm

Teresa Fung 馮小姐 9138 1621



Manderly Garden

深水灣 文禮苑

48 Deep Water Bay Road, Deep Water Bay
Spacious 5-bedroom townhouse in prestigious neighbourhood
寬敞五房排屋，尊貴地段，環境寧靜
3,594 s.f. (plus 691 s.f. roof)
\$88,000,000

www.landscape.com/14838.htm

Mark Mak 麥先生 6838 2929



Rosecliff 大潭 大潭道20號

20 Tai Tam Road, Tai Tam
Prestigious waterfront townhouse with nice decorations
豪華海濱排屋連雅緻裝修，可租可售
3,980 s.f.
(plus 1,050 s.f. roof and 649 s.f. garden)
\$92,000,000 also for lease \$230,000

www.landscape.com/15747.htm

Rebecca Cheung 張小姐 9021 7644



Southside single detached house

南區獨立大屋

5,600 s.f.
(plus 3,391 s.f. garden and 646 s.f. roof)
\$120,000,000 also for lease \$250,000

www.landscape.com/19656.htm

David Leung 梁先生 9199 0672



Turtle Cove
大潭 龜背灣
60 Tai Tam Road, Tai Tam
Rare find Tai Tam waterfront townhouse with picturesque views
罕有大潭海濱排屋連別具一格的景觀，可租可售
4,300 s.f.
\$120,000,000 also for lease \$250,000

www.landscape.com/14417.htm | Louis Wong 黃先生 9871 6828



Brand new duplex penthouse
全新頂層複式住宅
Brand new duplex penthouse with private terrace overlooking peaceful sea view
全新頂層複式連私家平台，俯瞰寧靜海景
3,845 s.f. (plus private roof and terrace)
Open Offer

www.landscape.com/19431.htm | Louis Wong 黃先生 9871 6828

SOUTHSIDE LEASE



Albany Court
薄扶林 雅鑾閣
51-53 Bisney Road, Pokfulam
3-bedroom low-rise in quiet neighbourhood
低密度三房住宅，環境清幽怡人
1,787 s.f.
\$50,000 incl.

www.landscape.com/19436.htm | Rowena Siu 蕭小姐 9348 4118



Scenic Villas
薄扶林 美景臺
2-28 Scenic Villa Drive, Pokfulam
Spacious 4-bedroom apartment with big balcony
寬敞四房單位連大陽臺
2,600 s.f.
\$70,000

www.landscape.com/19527.htm | Stella Lo 羅小姐 9809 8570



Hong Kong Parkview - Tower 13 淺水灣 陽明山莊13座
88 Tai Tam Reservoir Road, Repulse Bay
Spacious 4-bedroom apartment with excellent clubhouse facilities
寬敞四房住宅連完善住客會所設施
2,787 s.f.
\$85,000 incl.

www.landscape.com/19454.htm | Mary Li 李小姐 9011 6595



South Bay Palace
淺水灣 南灣御苑
25-31 South Bay Close, Repulse Bay
Spacious sea view modern mid-rise in quiet enclave
設計時尚寬敞中密度海景住宅，環境寧靜，可租可售
2,636 s.f.
\$85,000 incl. also for sale \$36,000,000

www.landscape.com/12360.htm | Mark Mak 麥先生 6838 2929



Fortuna Court
淺水灣 福慧大廈
25 Repulse Bay Road, Repulse Bay
Spacious 4-bedroom with 2 ensembles apartment overlooking Deep Water Bay
寬敞四房連兩套房單位，俯瞰深水灣全景，可租可售
2,857 s.f.
\$85,000 also for sale \$58,000,000

www.landscape.com/19357.htm | Stephen Chan 陳先生 9093 3381



Carmel Hill 赤柱 海明山
12 Carmel Road, Stanley
Boutique sea view townhouse with swimming pool and tennis court
精緻海景排屋連游泳池及網球場
2,400 s.f.
(plus 318 s.f. roof and 405 s.f. garden)
\$96,000 incl.

www.landscape.com/19621.htm | Mary Li 李小姐 9011 6595



Repulse Bay Towers
淺水灣 保華大廈
119A Repulse Bay Road, Repulse Bay
Full sea view duplex with spacious master ensuite
全海景複式住宅連寬敞主人套房，可租可售
3,100 s.f.
\$100,000 incl. also for sale \$55,000,000

www.landscape.com/8529.htm | Maria Cheung 張小姐 5182 8699




Ventura Villa
春坎角 華慧苑
27 Ching Sau Lane, Chung Hom Kok
Tastefully decorated townhouse with private terrace in quiet enclave
品味裝修排屋連私家平台，環境寧靜
2,400 s.f. (plus 400 s.f. terrace)
\$100,000

www.landscape.com/14430.htm | Mark Mak 麥先生 6838 2929



Carriana Sassoon 薄扶林 沙宣道41號
41 Sassoon Road, Pokfulam
Unique townhouse with private pool, garden and terrace in secluded location
精緻排屋連私家游泳池，花園及平台，環境寧靜
3,000 s.f.
(plus 971 s.f. terrace and 780 s.f. garden)
\$110,000 incl.

www.landscape.com/19180.htm | Yvonne Chang 鄭小姐 9088 4666



Belvedere
春坎角 浩瀚臺
41 Chung Hom Kok Road, Chung Hom Kok
Newly renovated townhouse with communal pool
全新裝修排屋連游泳池設施
3,200 s.f.
\$110,000 incl.

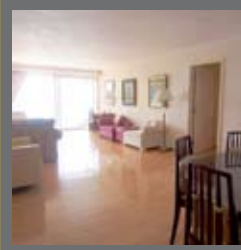
www.landscape.com/10933.htm | Yvonne Chang 鄭小姐 9088 4666

SOUTHSIDE LEASE



Manhattan Tower
淺水灣 曼赫頓大廈
63 Repulse Bay Road, Repulse Bay
Sought after 4-bedroom sea view apartment with balcony
熱門四房海景住宅連陽臺
2,400 s.f.
\$110,000 incl.

www.landscape.com/18842.htm | Rebecca Cheung 張小姐 9021 7644



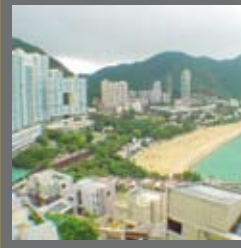
Twin Brook
淺水灣 雙溪
43 Repulse Bay Road, Repulse Bay
Spacious 4-bedroom unit with fascinating view of Deep Water Bay
寬敞四房單位，尊享無敵深水灣景觀，可租可售
2,700 s.f.
\$110,000 also for sale \$60,000,000

www.landscape.com/15419.htm | Rebecca Cheung 張小姐 9021 7644



Stanley Court 赤柱 海灣園
9 Stanley Mound Road, Stanley
Resort-style townhouse with private garden close to beach
渡假式排屋連私家花園，鄰近海灘
2,713 s.f.
(plus 622 s.f. roof and 457 s.f. garden)
\$120,000 incl.

www.landscape.com/18863.htm | Christine Chong 莊小姐 9648 6082



The Beachfront
淺水灣 壁池
7 Belleview Drive, Repulse Bay
Prestigious hillside townhouse with sweeping view of Repulse Bay Beach
豪華半山排屋享受遼闊淺水灣海灘景觀
3,000 s.f. (plus 200 s.f. terrace)
\$120,000 incl.

www.landscape.com/10146.htm | Mark Mak 麥先生 6838 2929



Evergreen Garden
壽臣山 松柏花園
18 Shouson Hill Road, Shouson Hill
Designer decorated garden duplex in tranquil location
設計師精心設計花園複式住宅，環境清幽怡人，可租可售
2,106 s.f. (plus 1,374 s.f. garden)
\$120,000 incl. also for sale \$50,000,000

www.landscape.com/15791.htm | David Chan 陳先生 9238 2012



The Somerset
淺水灣 怡峰
67 Repulse Bay Road, Repulse Bay
Rare find Repulse Bay duplex apartment
罕有淺水灣複式住宅
3,099 s.f.
\$125,000 incl.

www.landscape.com/14674.htm | Sissy Li 李小姐 9642 6969



Las Pinadas 壽臣山 朗松居
33 Shouson Hill Road, Shouson Hill
Popular townhouse with full clubhouse facilities in lush green surroundings
受歡迎排屋連完善住客會所設施，享翠綠美景
3,383 s.f.
(plus 777 s.f. roof and 214 s.f. garden)
\$138,000 incl.

www.landscape.com/19390.htm | Teresa Fung 馮小姐 9138 1621



Le Palais
大潭 皇府灣
8 Pak Pat Shan Road, Tai Tam
High quality waterfront townhouse with private garden in serene Tai Tam
大潭優質海濱排屋連私家花園，環境寧靜，可租可售
3,348 s.f. (plus 741 s.f. garden)
\$140,000 incl. also for sale \$60,000,000

www.landscape.com/18829.htm | Stephen Chan 陳先生 9093 3381



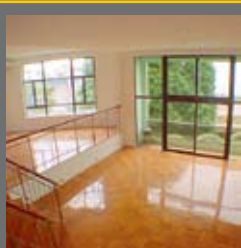
5 Headland Road, Repulse Bay 淺水灣 赫蘭道5號
Newly renovated garden low-rise in secluded area
全新裝修低密度住宅連花園，環境清幽怡人
3,200 s.f. (plus 2,040 s.f. garden)
\$140,000

www.landscape.com/13051.htm | David Chan 陳先生 9238 2012



Belleview Place 淺水灣 寶晶苑
93 Repulse Bay Road, Repulse Bay
High quality sea view townhouse with private garage
高質素海景排屋連私家花園，可租可售
3,619 s.f.
(plus 747 s.f. roof and 171 s.f. terrace)
\$150,000 incl. also for sale \$75,000,000

www.landscape.com/18963.htm | Maria Cheung 張小姐 5182 8699



Fairview Court
淺水灣 富慧閣
94 Repulse Bay Road, Repulse Bay
Huge 5-bedroom garden flat in tranquil area of Repulse Bay
淺水灣巨型五房花園住宅，環境清幽怡人
4,155 s.f. (plus 764 s.f. garden)
\$170,000

www.landscape.com/14194.htm | Sissy Li 李小姐 9642 6969



Carmelia
赤柱 赤柱村道60號
60 Stanley Village Road, Stanley
Huge colonial house with front yard and private garden
巨型英式大屋連前院及私家花園
5,200 s.f. (plus 1,891 s.f. garden)
\$210,000 incl.

www.landscape.com/8783.htm | Louis Wong 黃先生 9871 6828



Sea View Villa 西貢 西沙小築

102 Chuk Yeung Road, Sai Kung
Modern stylish sea view townhouse with huge terrace and garden
時尚品味海景大屋連巨型平台及花園

1,994 s.f.
(plus 1,066 s.f. garden and 348 s.f. roof)
\$28,000,000

www.landscape.com/19628.htm

Sami Woo 胡小姐 9493 8275



THE PEAK SALES

山頂出售



Villa Verde

山頂 環翠園

4-18 Guildford Road, The Peak
Spacious and practical apartment at lower Peak
山頂寬敞住宅，間隔實用

1,505 s.f.
\$25,000,000

www.landscape.com/18186.htm

Eric Wong 黃先生 9740 3396



Barker Villa

山頂 柏架別墅

41 Barker Road, The Peak
Cozy apartment with panoramic harbour view on Barker Road
白加道精緻住宅享美麗的維港景，可租可售

1,650 s.f.
\$35,000,000 also for lease \$65,000 incl.

www.landscape.com/4184.htm

Louis Wong 黃先生 9871 6828



Oasis

山頂 欣怡居

8-12 Peak Road, The Peak
Brand new harbour view apartment with high ceiling
全新維港景高樓底住宅，可租可售

2,891 s.f.
\$54,800,000 also for lease \$120,000 incl.

www.landscape.com/6634.htm

Sissy Li 李小姐 9642 6969



Stewart Terrace

山頂 史釗域臺

81-95 Peak Road, The Peak
Colonial large flat in serene and lush green environment
特大英式翠綠園景住宅，環境寧靜

3,103 s.f.
\$63,000,000

www.landscape.com/13029.htm

David Leung 梁先生 9199 0672



Montebello

山頂 濠景閣

15-17 Plantation Road, The Peak
Rarely available 4-ensuite duplex with sweeping harbour view
罕有四套房複式單位，尊享寧靜維港景，可租可售

4,455 s.f.
\$158,000,000 also for lease \$250,000 incl.

www.landscape.com/14030.htm

David Leung 梁先生 9199 0672



38 Black's Link, The Peak

山頂 布力徑38號

Rare luxurious townhouse overlooking Deep Water Bay and the golf course
罕有豪華排屋，俯瞰深水灣及高爾夫球場，可租可售

4,750 s.f.
\$200,000,000 also for lease \$225,000 incl.

www.landscape.com/19109.htm

David Leung 梁先生 9199 0672



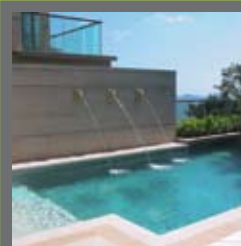
1-9 Rosmead Road, The Peak

山頂 樂善美道1至9號
Rare single number garden house on The Peak
山頂罕有獨立花園大屋

5,887 s.f.
(plus 2,228 s.f. terrace and 1,955 s.f. garden)
\$230,000,000

www.landscape.com/14009.htm

Rebecca Cheung 張小姐 9021 7644



28 Gough Hill Road, The Peak

山頂 歌賦山道28號
Exclusive Peak house with private pool and lift
獨特山頂大屋連私家游泳池及電梯

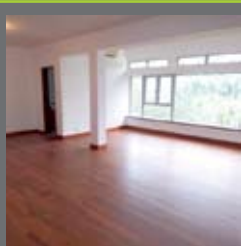
6,080 s.f.
(plus 2,103 s.f. garden and 196 s.f. roof)
\$238,000,000

www.landscape.com/14845.htm

David Leung 梁先生 9199 0672

THE PEAK LEASE

山頂出租



Carolina Garden

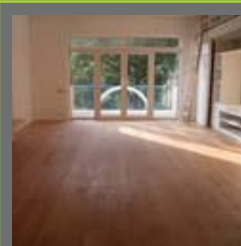
山頂 嘉樂園

20-34 Coombe Road, The Peak
Rare colonial apartment on Coombe Road overlooking Aberdeen Country Park
甘道罕有英式住宅，俯瞰香港仔郊野公園

2,350 s.f.
\$78,000

www.landscape.com/19493.htm

Teresa Fung 馮小姐 9138 1621



Stewart Terrace

山頂 史釗域臺

81-95 Peak Road, The Peak
Colonial low-rise apartment with nice decor on The Peak
山頂低密度英式單位，配以雅緻裝修，可租可售

3,077 s.f.
\$90,000 also for sale \$48,000,000

www.landscape.com/18444.htm

Teresa Lau 劉小姐 9080 6686

THE PEAK LEASE

山頂出租



74 Mount Kellett Road, The Peak 山頂 加列山道74號

Exclusive garden house on The Peak with Southside sea view
山頂獨特花園大屋，尊享南區海景

4,200 s.f. (plus 1,935 s.f. garden)
\$165,000 incl.

www.landscape.com/19339.htm

Yvonne Chang 鄭小姐 9088 4666



Mount Austin Estate 山頂 山景花園別墅

5 Mount Austin Road, The Peak
Nicely renovated townhouse with private garden overlooking green view
雅緻裝修排屋連私家花園，俯瞰翠綠園景

3,614 s.f.
\$180,000

www.landscape.com/19654.htm

Sami Woo 胡小姐 9493 8275



Orient Crest 山頂 山頂道76號

76 Peak Road, The Peak
Newly renovated modern townhouse with pool
山頂時尚排屋，連傢俬及游泳池

3,300 s.f.
\$195,000 incl.

www.landscape.com/10985.htm

Teresa Fung 馮小姐 9138 1621



Cheuk Nang Lookout 山頂 卓能山莊

30 Severn Road, The Peak
Detached house with private pool and terrace
山頂獨立大屋連私家游泳池及平台，可租可售

5,300 s.f.
(plus 3,900 s.f. garden and 1,400 s.f. terrace)
\$200,000 also for sale \$140,000,000

www.landscape.com/2109.htm

Maria Cheung 張小姐 5182 8699



2 Barker Road, The Peak 山頂 白加道2號

Exquisite 4-bedroom townhouse enjoying excellent harbour view
精緻四房排屋，尊享無敵維港景觀

4,082 s.f.
(plus 1,781 s.f. terrace and 526 s.f. roof)
\$230,000

www.landscape.com/18597.htm

Teresa Fung 馮小姐 9138 1621



The Kenlis 山頂 加列山道34號

34 Mount Kellett Road, The Peak
Colonial style detached townhouse with private pool and garden
英式獨立大屋連私家游泳池及花園

3,521 s.f. (plus 1,588 s.f. garden)
\$300,000 incl.

www.landscape.com/1978.htm

Louis Wong 黃先生 9871 6828



24 Middle Gap Road, The Peak 山頂 中峽道24號

Single detached house rare for lease
山頂獨立大屋罕有放租

5,750 s.f. (plus 12,000 s.f. garden)
\$340,000 incl.

www.landscape.com/1376.htm

Rebecca Cheung 張小姐 9021 7644



40 Peak Road, The Peak 山頂 山頂道40號

Extravagant townhouse with stunning harbour view
山頂豪華排屋享一望無際維港景觀

5,419 s.f. (plus 3,151 s.f. garden)
\$350,000

www.landscape.com/6780.htm

Louis Wong 黃先生 9871 6828

MID-LEVELS SALES

半山出售



Winfield Gardens 跑馬地 永富苑

34-40 Shan Kwong Road, Happy Valley
Cozy 3-bedroom apartment near Jockey Club Happy Valley Clubhouse
迷人三房單位鄰近賽馬會會所

1,500 s.f.
\$9,800,000

www.landscape.com/19627.htm

Walker Lam 林先生 9551 1077



Venice Garden 跑馬地 建雅花園

91-93 Blue Pool Road, Happy Valley
Well decorated apartment in quiet location
雅緻裝修單位，環境清幽寧靜

1,429 s.f.
\$10,800,000

www.landscape.com/19598.htm

Christine Chong 莊小姐 9648 6082



Scenic Garden 西半山 福苑

9 Kotewall Road, Midlevels West
Cozy 3-bedroom apartment in convenient yet quiet location
迷人三房住宅，環境寧靜，交通方便

1,534 s.f.
\$13,000,000

www.landscape.com/19514.htm

Rowena Siu 蕭小姐 9348 4118



Camelot Height 中半山 金鑾閣

66 Kennedy Road, Midlevels Central
Spacious 3-bedroom apartment with open city view
寬敞三房住宅享開揚城市景觀，可租可售

1,520 s.f.
\$13,800,000 also for lease \$45,000 incl.

www.landscape.com/17973.htm

Stephen Chan 陳先生 9093 3381



Dragon Garden
渣甸山 龍園
1 Chun Fai Terrace, Jardine's Lookout
Spacious 3-bedroom apartment in convenient location
渣甸山寬敞三房單位，交通方便
1,750 s.f.
\$14,500,000

www.landscape.com/16836.htm | Stephen Chan 陳先生 9093 3381



Greenland Court
中半山 恆翠園
56-58 Macdonnell Road, Midlevels Central
Practical 3-bedroom mid-rise apartment in good condition
中密度三房單位間隔實用，位處優越地段
1,350 s.f.
\$16,000,000

www.landscape.com/19190.htm | Eric Wong 黃先生 9740 3396



Monticello
中半山 滿峰台
48 Kennedy Road, Midlevels Central
Conveniently located 3-bedroom flat with open city view
三房住宅連開揚城市景觀，交通方便
1,447 s.f.
\$16,500,000

www.landscape.com/13279.htm | Stella Lo 羅小姐 9809 8570



1 Po Shan Road, Midlevels West
西半山 寶珊道1號
High quality modern mid-rise apartment
西半山優質時尚中密度住宅，可租可售
1,324 s.f.
\$16,550,000 also for lease \$49,000 incl.

www.landscape.com/12760.htm | Walker Lam 林先生 9551 1077



Wah Fung Mansion
東半山 華峰閣
27 Tai Hang Road, Midlevels East
Unique spacious apartment with balcony occupying whole floor
東半山特色寬敞實用住宅連陽臺，可租可售
2,087 s.f.
\$18,000,000 also for lease \$50,000 incl.

www.landscape.com/17866.htm | Carman Szeto 司徒小姐 6183 8339



Greenville Gardens
東半山 嘉苑
15 Shiu Fai Terrace, Midlevels East
4 bedrooms with balcony and nice deco, overlooking greenery view
雅緻裝修四房單位連陽臺，享翠綠景觀
1,750 s.f.
\$18,500,000

www.landscape.com/19464.htm | Teresa Lau 劉小姐 9080 6686



Amber Garden
中半山 柏苑
70-72 Kennedy Road, Midlevels Central
Practical 3-bedroom flat on fringe of Wan Chai
實用三房單位，鄰近灣仔，可租可售
1,732 s.f.
\$19,800,000 also for lease \$60,000 incl.

www.landscape.com/12761.htm | Sissy Li 李小姐 9642 6969



Hillsborough Court
中半山 曉峰閣
18 Old Peak Road, Midlevels Central
Boutique apartment with 5-star clubhouse facilities
中半山精緻住宅連完善住客會所設施
1,385 s.f.
\$20,000,000

www.landscape.com/19551.htm | Maria Cheung 張小姐 5182 8699



Fairville Garden
跑馬地 惠園
63 Blue Pool Road, Happy Valley
Spacious practical mid-rise flat with large balcony
間隔寬敞中密度住宅連巨型陽臺，可租可售
1,800 s.f.
\$20,000,000 also for lease \$55,000 incl.

www.landscape.com/12462.htm | Walker Lam 林先生 9551 1077



Yuenita Villa
跑馬地 苑蘆
43A-B Blue Pool Road, Happy Valley
Colonial apartment with high efficiency on Blue Pool Road
南塘道英式住宅，實用率高
2,380 s.f.
\$21,000,000

www.landscape.com/16562.htm | Walker Lam 林先生 9551 1077



The Elegance
東半山 優雅閣
60 Tai Hang Road, Midlevels East
Nicely fitted and equipped duplex on Tai Hang Road sale with tenancy
大坑道良好配置複式住宅連約售，投資首選
2,438 s.f.
\$21,000,000

www.landscape.com/14147.htm | Stephen Chan 陳先生 9093 3381



Elm Tree Towers
渣甸山 愉富大廈
8-10 Chun Fai Road, Jardine's Lookout
Well decorated large 3-bedroom family apartment
精美裝修大型三房家庭式住宅，可租可售
2,028 s.f.
\$21,000,000 also for lease \$60,000 incl.

www.landscape.com/19084.htm | Mary Li 李小姐 9011 6595

MID-LEVELS SALES



Rosedale

東半山 玫瑰花園

6 Fuk Kwan Avenue, Midlevels East
Spacious mid-rise with private roof and nice decor
寬敞中密度住宅連私家天台及雅緻裝修, 可租可售
2,382 s.f. (plus 1,500 s.f. roof)
\$23,000,000 also for lease \$55,000 incl.

www.landscape.com/17157.htm

Walker Lam 林先生 9551 1077



2-4 Hawthorn Road, Happy Valley

跑馬地 荷塘道2-4號
Rare colonial 4-bedroom apartment with garden in low-rise area
罕有低密度英式四房住宅連花園
2,600 s.f. (plus 2,000 s.f. garden)
\$24,500,000

www.landscape.com/17014.htm

Christine Chong 莊小姐 9648 6082



Villa Monte Rosa

東半山 玫瑰新村

41A Stubbs Road, Midlevels East
Large practical apartment on upper Stubbs Road
東半山巨型實用間隔住宅
2,300 s.f.
\$25,000,000

www.landscape.com/19024.htm

Carman Szeto 司徒小姐 6183 8339



Century Tower I

中半山 世紀大廈 1座

1 Tregunter Path, Midlevels Central
Unique flat with large balcony and view
獨特巨型陽臺住宅, 尊享壯麗景觀
2,565 s.f.
\$28,000,000

www.landscape.com/1113.htm

Stella Lo 羅小姐 9809 8570



Po Garden

中半山 寶園

9 Brewin Path, Midlevels Central
Nicely decorated flat with full facilities in lower Peak
中半山雅緻裝修單位連完善住客會所設施, 可租可售
2,594 s.f.
\$29,000,000 also for lease \$80,000 incl.

www.landscape.com/16811.htm

Walker Lam 林先生 9551 1077



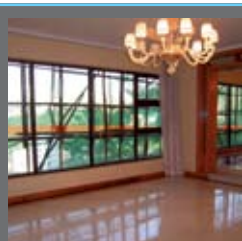
Bowen Place

中半山 寶雲閣

1A Bowen Road, Midlevels Central
Harbour view flat with European style decorations
英式設計維港景住宅, 可租可售
1,927 s.f.
\$33,000,000 also for lease \$75,000 incl.

www.landscape.com/18970.htm

David Chan 陳先生 9238 2012



Leon Court 東半山 利安閣

12-14 Wong Nai Chung Gap Road, Midlevels East
Spacious 3-bedroom apartment in prime location
寬敞三房單位, 地段尊貴, 可租可售
2,800 s.f.
\$36,000,000 also for lease \$85,000 incl.

www.landscape.com/18244.htm

Carman Szeto 司徒小姐 6183 8339



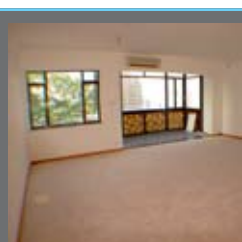
Evergreen Villa

東半山 松柏新村

43 Stubbs Road, Midlevels East
Large practical flat with harbour view
維港景住宅, 間格寬敞實用
2,560 s.f.
\$38,000,000

www.landscape.com/7497.htm

Carman Szeto 司徒小姐 6183 8339

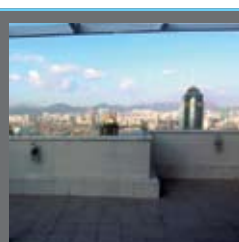


Rose Gardens 中半山 玫瑰別墅

9 Magazine Gap Road, Midlevels Central
Rare find mid-rise apartment at prime location with Central view
罕有中密度單位, 位於中半山尊貴地段欣賞中環景色, 可租可售
2,600 s.f.
\$38,000,000 also for lease \$85,000 incl.

www.landscape.com/14200.htm

Teresa Lau 劉小姐 9080 6686



Elegant Terrace 西半山 慧明苑

36 Conduit Road, Midlevels West
Rare duplex unit with private roof overlooking the harbour
罕有複式住宅連私家天台, 俯瞰維港景色
2,874 s.f.
(plus 737 s.f. roof and 94 s.f. terrace)
\$40,000,000

www.landscape.com/19503.htm

David Chan 陳先生 9238 2012



Garden Terrace

中半山 花園臺

8 Old Peak Road, Midlevels Central
4-ensuite apartment at prime location
中半山四房住宅, 位處優越地段
3,002 s.f.
\$45,000,000

www.landscape.com/19584.htm

Mira To 杜小姐 9486 1566



Broadwood Park

跑馬地 柏樂苑

38 Broadwood Road, Happy Valley
Large 3-bedroom apartment overlooking Hong Kong Stadium
巨型三房住宅俯瞰香港大球場景觀
2,913 s.f.
\$53,000,000

www.landscape.com

Stephen Chan 陳先生 9093 3381

MID-LEVELS SALES

半山
出售



The Albany
中半山 雅賓利大廈
1 Albany Road, Midlevels Central
Exclusive apartment with stunning views
高尚單位享無敵景觀，可租可售

2,546 s.f.
\$55,800,000 also for lease \$118,000

www.landscape.com/5335.htm | Sissy Li 李小姐 9642 6969



Dynasty Court
中半山 帝景園
23 Old Peak Road, Midlevels Central
Prestigious 4-bedroom apartment with
grand clubhouse
豪華四房單位連華麗住客會所設施

2,680 s.f.
\$66,000,000

www.landscape.com/12423.htm | Mira To 杜小姐 9486 1566

MID-LEVELS LEASE

半山
出租



Valverde
中半山 蔚皇居
11 May Road, Midlevels Central
Luxury boutique flat in Midlevels Central
中半山豪華精緻單位，可租可售

1,373 s.f.
\$58,000 incl. also for sale \$21,000,000

www.landscape.com/19590.htm | Eric Wong 黃先生 9740 3396



Pearl Gardens
西半山 明珠臺
7 Conduit Road, Midlevels West
Spacious and practical apartment with big
round balcony
間隔寬敞實用住宅連特大陽臺，可租可售

2,200 s.f.
\$60,000 incl. also for sale \$21,000,000

www.landscape.com/18684.htm | Rowena Siu 蕭小姐 9348 4118



Park Mansions
中半山 百年順大廈
27-29 MacDonnell Road, Midlevels Central
Spacious 4-bedroom apartment on fringe
of Central
中半山寬敞四房住宅，鄰近中環

2,013 s.f.
\$62,000 incl.

www.landscape.com/19633.htm | David Chan 陳先生 9238 2012



Old Peak Mansion
中半山 舊山頂道5號
5 Old Peak Road, Midlevels Central
Popular colonial style apartment with
large balcony
受歡迎英式住宅連巨型陽臺

2,088 s.f.
\$62,000

www.landscape.com/10299.htm | Christine Chong 莊小姐 9648 6082



Wealthy Heights
中半山 威豪閣
35 Macdonnell Road, Midlevels Central
Central apartment with 4 bedrooms
overlooking city view
中環四房單位，尊享開揚城市景觀

2,218 s.f.
\$65,000 incl.

www.landscape.com/6457.htm | Carman Szeto 司徒小姐 6183 8339



Po Garden
中半山 寶園
9 Brewin Path, Midlevels Central
Practical 3-bedroom apartment on fringe
of Central
實用三房住宅連會所設施，鄰近中環

2,572 s.f.
\$69,000 incl. **SOLE AGENT 獨家代理**

www.landscape.com/10909.htm | Yvonne Chang 鄭小姐 9088 4666



**36B Kennedy Road,
Midlevels Central**
中半山 堅尼地道36B號
Exclusive large 4-bedroom flat with all
brand new deco, facing Hong Kong Garden
獨特巨型四房連全新裝修，望香港公園景，鄰近中環，可租可售

2,500 s.f.
\$70,000 incl. also for sale \$33,000,000

www.landscape.com/19074.htm | Teresa Lau 劉小姐 9080 6686



Elm Tree Towers
渣甸山 愉富大廈
8-10 Chun Fai Road, Jardine's Lookout
Spacious 3-bedroom apartment with
facilities in prime location
寬敞三房住宅連住客會所設施，地段尊貴，可租可售

2,329 s.f.
\$75,000 incl. also for sale \$28,000,000

www.landscape.com/18663.htm | Mark Mak 麥先生 6838 2929



Silvercrest
中半山 聚安樓
24 Macdonnell Road, Midlevels Central
Unique whole floor apartment with
open view
獨一無二全層單位連開揚城市景觀，可租可售

2,643 s.f.
\$75,000 incl. also for sale \$35,000,000

www.landscape.com/17721.htm | David Chan 陳先生 9238 2012



The Colonnade
東半山 嘉崙臺
152 Tai Hang Road, Midlevels East
Stylish modern high-rise with stunning
view on convenient Tai Hang Road
大坑道時尚高密度住宅，享壯麗景觀

1,857 s.f.
\$80,000 incl.

www.landscape.com/19592.htm | Sami Woo 胡小姐 9493 8275

MID-LEVELS LEASE



Villa De Perkins
渣甸山 禮苑
15 Perkins Road, Jardine's Lookout
Modern mid-rise duplex with roof in Jardine's Lookout
渣甸山時尚中密度複式單位連天台
3,200 s.f. (plus 2,000 s.f. roof)
\$88,000 incl.

www.landscape.com/16973.htm | Stella Lo 羅小姐 9809 8570



Kam Yuen Mansion
中半山 錦園大廈
3 Old Peak Road, Midlevels Central
Colonial style large apartment with new decorations
巨型英式住宅, 配以全新裝修
2,700 s.f. (plus 712 s.f. roof)
\$88,000 incl.

www.landscape.com/19547.htm | Rowena Siu 蕭小姐 9348 4118



Trafalgar Court
東半山 大寶閣
70 Tai Hang Road, Midlevels East
High efficiency huge 5-bedroom apartment close to Causeway Bay
特大五房住宅, 實用率高, 鄰近銅鑼灣
3,008 s.f.
\$95,000 incl.

www.landscape.com/19508.htm | Sami Woo 胡小姐 9493 8275



May Tower I
中半山 梅苑
7 May Road, Midlevels Central
Harbour view duplex apartment in prime location
維港景複式住宅, 位於尊貴地段, 可租可售
2,850 s.f.
\$98,000 incl. also for sale \$40,000,000

www.landscape.com/15356.htm | Teresa Lau 劉小姐 9080 6686



Taipan Court
東半山 大班閣
47B Stubbs Road, Midlevels East
Spacious 4-bedroom triplex with unobstructed views
寬敞四房三連單位, 尊享一望無際景觀
3,670 s.f.
\$98,000

www.landscape.com/17415.htm | Carman Szeto 司徒小姐 6183 8339



Clovelly Court
中半山 嘉富麗苑
12 May Road, Midlevels Central
Nicely prepared apartment in popular family development
受歡迎家庭式精緻單位出租
2,809 s.f.
\$100,000 incl.

www.landscape.com/1155.htm | Eric Wong 黃先生 9740 3396



Tregunter Tower 1
中半山 地利根德閣1座
14 Tregunter Path, Midlevels Central
High floor 4-bedroom apartment fantastic view
高層四房單位連醉人的景觀, 可租可售
3,336 s.f.
\$110,000 incl. also for sale \$36,000,000

www.landscape.com/10974.htm | Mira To 杜小姐 9486 1566



Bowen Mansion
中半山 寶雲大廈
7C Bowen Road, Midlevels Central
Spacious 4 bedrooms colonial apartment with huge balcony on fringe of Admiralty
寬敞回房英式住宅連巨型陽臺, 鄰近金鐘
3,500 s.f.
\$115,000 incl.

www.landscape.com/19209.htm | Yvonne Chang 鄭小姐 9088 4666



The Albany
中半山 雅賓利大廈
1 Albany Road, Midlevels Central
Newly renovated duplex apartment on fringe of Central
全新裝修複式單位, 鄰近中環, 可租可售
3,563 s.f.
\$120,000 also for sale \$71,000,000

www.landscape.com/14475.htm | Rebecca Cheung 張小姐 9021 7644



Eva Court
中半山 惠園
36 Macdonnell Road, Midlevels Central
Rare find huge apartment close to Central
中半山特大單位, 鄰近中環, 罕有放租
4,500 s.f.
\$160,000 incl.

www.landscape.com/11270.htm | Eric Wong 黃先生 9740 3396



Landscape Realty Limited C-018733

a member of Landscape Surveyors Ltd

Tel: 852-2866 0022 Fax: 852-2866 0015
Email: info@landscape.com Website: www.landscape.com
Unit 3106, 31/F, Hopewell Centre,
183 Queen's Road East, Wanchai, Hong Kong

The information, text, photos, analyses and projections contained herein are provided solely for the convenience of prospective clients and no warranty or representation as to their accuracy, correctness or completeness is made by Landscape Surveyors Limited, Landscape Realty Limited or the owners, none of whom shall have any liability or obligation with respect thereto. Interested parties should rely on their own investigations, interpretations and analyses in connection with the purchase or letting thereof.

Information has been provided to us by sources deemed reliable, but no warranty or representation is made as to its accuracy, correctness or completeness. These offerings are made subject to contract, correction of errors, omissions, prior sale or lease, change of price or terms or withdrawal from the market without notice. The contents of The Key are for reference only and do not constitute all or any part of a contract.

Copyright 2009