

select deluxe homes

The Key

大宅®

MAY 2009
Volume 55

published and distributed by

LANDSCOPE 領域®
The Specialists in Luxury Properties



LIFE AT
THE TOP

www.landscape.com



KeyNotes

"Life can only be understood backwards, but it must be lived forwards."

Soren Kierkegaard

In a marketplace that is swamped by bad news every day, some recent economic data released in the US and China is re-igniting hopes of a recovery. While unemployment rates see no sign of abating and international import / export trades continue to record worst figures for decades, liquidity in the financial markets has eased on the back of strong injection of capital from the governments, particularly in the US and China.

In Hong Kong, property sales picked up after Chinese New Year in both primary and secondary markets, though not without price reductions. It is already a better-than-expected result, as the price war was somehow predicted ("Price War", Market Watch, February 14, 2009). In March alone, luxury property sales on Hong Kong Island had surpassed October 2008 to February 2009 combined. The increased sales had largely been spurred by the relaxed mortgage policies when banks had started a new round of mortgage war for fear of losing market share and business opportunities due to prolonged credit freeze in the proceeding months.

Koh Keng-shing
ks-koh@landscape.com

(The above are an excerpt from Market Watch on www.landscape.com. For the full article, please log on to www.landscape.com/m0509.htm)

About The Key

The Key is a monthly publication of sales and letting listings of luxury residential properties on Hong Kong Island. It is sent to VIP clients of Landscape Realty and residents of The Peak, Southside, Mid-Levels, Kowloon Tong, Homantin and selected upmarket residential areas in Shatin, Tai Po, Clear Water Bay and Castle Peak Road. The recipients comprise the crème de la crème of Hong Kong's affluent community.

In addition to The Key, Landscape Realty sends weekly eNewsletters to clients on most update listings of luxury properties. If you wish to receive the eNewsletter, please call Loretta Lui at 3102 4818 or email to info@landscape.com.

How may you list your property with The Key?

If you would like to see your property listed in The Key in the next issue, you may call Loretta Lui at 3102 4818 or email to info@landscape.com. Or you may simply fill out the space below and fax to us at 2866 0015.

Property to be listed

Asking Rental / Sale Price

Floor Area

Contact Person

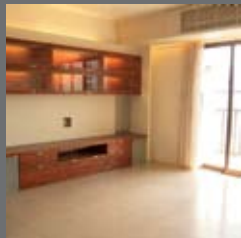
Telephone

Email

Our KeyPersons will contact you for follow-up works.

THE PEAK SALES

山頂出售



Villa Verde

山頂 環翠園

4-18 Guildford Road, The Peak
Boutique apartment with balcony overlooking mountain view
山頂精緻住宅連陽臺，俯瞰一望無際的山景，可租可售
1,200 s.f.
\$20,000,000 also for lease \$60,000 incl.

www.landscape.com/17722.htm | Maria Cheung 張小姐 5182 8699



Guildford Garden

山頂 喬苑

1-3 Mansfield Road, The Peak
Lower Peak 4-bedroom flat with spacious practical layout
山頂四房單位，間隔寬敞實用
2,400 s.f.
\$35,000,000

www.landscape.com/14486.htm | Maria Cheung 張小姐 5182 8699

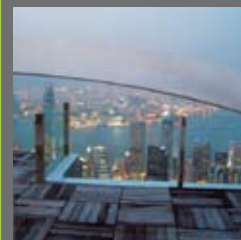


Montebello

山頂 濠景閣

15-17 Plantation Road, The Peak
Newly furnished penthouse with private roof on The Peak
山頂頂層單位連私家天台，配以全新傢俬，可租可售
3,140 s.f. (plus 2,083 s.f. roof)
\$53,000,000 also for lease \$150,000 incl.

www.landscape.com/5851.htm | David Leung 梁先生 9199 0672



Villa De Victoria

山頂 維景山莊

19 Plantation Road, The Peak
Harbour view duplex with designer decorations
設計師精心設計複式住宅，尊享維港景，地段尊貴
3,500 s.f. (plus 733 s.f. roof)
\$65,000,000

www.landscape.com/4213.htm | David Leung 梁先生 9199 0672



Strawberry Hill

山頂 紅莓閣

8 Plunkett's Road, The Peak
Peak colonial house with spacious practical layout
山頂間隔寬敞的英式大屋，實用率高
3,190 s.f.
\$80,000,000

www.landscape.com/15722.htm | Stephen Chan 陳先生 9093 3381



Overthorpe

山頂 豐林閣

24-28 Mount Austin Road, The Peak
Peak townhouse in prestigious location with nice decorations
山頂排屋，位處尊貴地段，配以良好裝修
2,502 s.f. (plus 1,624 s.f. garden)
\$80,000,000

www.landscape.com/16096.htm | Mark Mak 麥先生 6838 2929

LIFE AT THE TOP

Perched high at one of the most prestigious addresses in Hong Kong, this brand new, detached house takes in the most stunning, uninterrupted Victoria Harbour panorama. The grand foyer extends up to a height of over 20 feet, and is graced with Baccarat chandelier. A white double door opens into lavishly decorated dining room and living room, which walks out to a private pool in the back drop of the harbour. Pinnacle life style is not complete without a fireplace and a grand piano. Upstairs are three bedrooms each with well appointed ensuite bathrooms, while two of them have access to a spacious balcony with harbour view. Further up is the top floor, which is occupied entirely by the master's ensuite, including bedroom, bathroom, study and a generous terrace on the harbour side. The flat roof is accessed through an electrically controlled glass roof door. A private lift serves from the basement garage to the master floor, a feature that is rare to find in most Hong Kong's houses. An unrivalled life at the top.



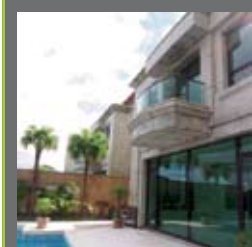
46 Plantation Road, The Peak

山頂 種植道52號

5,730 s.f.
\$380,000 incl.

www.landscape.com/18865.htm

Mary Li 李小姐 9011 6595



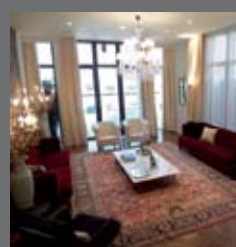
Kelletteria 山頂 加列山道71號

71 Mount Kellett Road, The Peak
Peak luxurious mansion with private pool and garage enjoy full sea view
山頂豪華住宅大廈，配以私家泳池及車房享全海景

3,198 s.f.
(plus 1,370 s.f. garden and 906 s.f. roof)
\$100,000,000

www.landscape.com/13460.htm

Teresa Fung 馮小姐 9138 1621



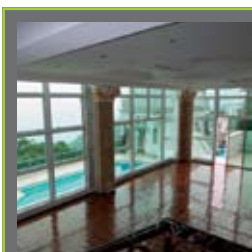
Abergeldie 山頂 種植道52號

52 Plantation Road, The Peak
Newly renovated townhouse with pool overlooking Victoria Harbour panorama
全新裝修山頂排屋連泳池，俯瞰維港全景

3,688 s.f.
(plus 759 s.f. garden and 313 s.f. roof)
\$130,000,000

www.landscape.com/18449.htm

David Leung 梁先生 9199 0672



Cheuk Nang Lookout 山頂 卓能山莊

30 Severn Road, The Peak
Detached house with private pool and terrace
山頂獨立大屋連私家泳池及平台，可租可售

5,300 s.f.
(plus 3,900 s.f. garden and 1,400 s.f. terrace)
\$140,000,000 also for lease \$200,000

www.landscape.com/2109.htm

Maria Cheung 張小姐 5182 8699



Black's Link, The Peak 山頂 布力徑

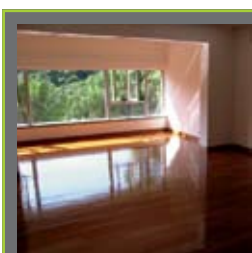
Detached garden house with fantastic harbour view on The Peak
山頂獨立大屋，尊享驚人的維港景觀

4,000 s.f. (plus 5,700 s.f. garden)
\$160,000,000

www.landscape.com/18215.htm

Louis Wong 黃先生 9871 6828

THE PEAK LEASE



Carolina Garden 山頂 嘉樂園

20-34 Coombe Road, The Peak
Rare colonial apartment in prestigious location
罕有英式住宅，位於山頂尊貴地段

2,350 s.f.
\$70,000

www.landscape.com/12648.htm

Mira To 杜小姐 9486 1566



37 Barker Road, The Peak

山頂 白加道37號
Peak apartment with stunning Victoria Harbour view
山頂住宅，尊享驚人的維港景觀，地段尊貴

2,100 s.f.
\$80,000

www.landscape.com/2124.htm

Maria Cheung 張小姐 5182 8699

THE PEAK LEASE

山頂出租



Coombe Apartments

山頂 甘道15-17號

15-17 Coombe Road, The Peak
Stylish colonial apartment in secluded green surroundings
設計時尚英式住宅，位於山頂寧靜地段，尊享翠綠園景
2,150 s.f.
\$86,000

www.landscape.com/17302.htm | Maria Cheung 張小姐 5182 8699

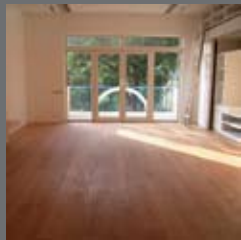


Mountain Lodge

山頂 崑廬

44 Mount Kellett Road, The Peak
4-bedroom sea view apartment in prestigious location
山頂四房海景住宅，地段尊貴
2,600 s.f.
\$90,000 incl.

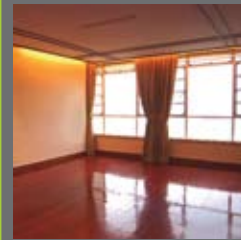
www.landscape.com/7912.htm | Sami Woo 胡小姐 9493 8275



Stewart Terrace 山頂 史釗域臺

81-95 Peak Road, The Peak
Colonial low-rise apartment with nice decor rare on market
山頂英式低密度住宅，配以雅致裝修，可租可售，罕有放盤
3,077 s.f.
\$95,000 also for sale \$48,000,000

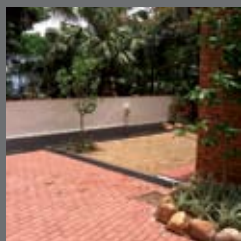
www.landscape.com/18444.htm | Teresa Lau 劉小姐 9080 6686



La Hacienda

山頂 加列山道29-33號
29-33 Mount Kellett Road, The Peak
High-ceilinged colonial apartment with Southside sea view
高樓底英式住宅，尊享南區海景
3,386 s.f.
\$120,000

www.landscape.com/18845.htm | Mary Li 李小姐 9011 6595



Orient Crest

山頂 山頂道76號
76 Peak Road, The Peak
Charming townhouse with huge private terrace and balcony
山頂迷人排屋連巨型私家平台及陽臺
3,300 s.f. (plus 600 s.f. terrace)
\$145,000

www.landscape.com/18836.htm | Mary Li 李小姐 9011 6595



74 Mount Kellett Road, The Peak 山頂 加列山道74號

Peak townhouse with sea and hill views
山頂排屋，尊享海景及翠綠山景
3,800 s.f.
(plus 2,207 s.f. garden and 677 s.f. roof)
\$150,000 incl.

www.landscape.com/10636.htm | Christine Chong 莊小姐 9648 6082



15 Gough Hill Road, The Peak 山頂 歌賦山道15號

Rare single detached house on The Peak
山頂罕有獨立大屋，可租可售
4,607 s.f.
(plus 13,000 s.f. garden)
\$200,000 incl.

www.landscape.com/12223.htm | Yvonne Chang 鄭小姐 9088 4666



Mountain Court 山頂 山景大廈

11 Plantation Road, The Peak
Meticulously finished duplex apartment with private roof terrace overlooking the Harbour panorama
山頂複式住宅配以一絲不苟的裝修及私家天台，俯瞰維港全景
4,256 s.f.
\$239,000

www.landscape.com/13092.htm | Louis Wong 黃先生 9871 6828



56 Plantation Road, The Peak 山頂 種植道56號

Peak townhouse with extravagant view of Victoria Harbour
山頂排屋，俯瞰壯觀的維港景觀
4,686 s.f.
(plus 834 s.f. roof and 442 s.f. garden)
\$300,000

www.landscape.com/14847.htm | Yvonne Chang 鄭小姐 9088 4666



24 Middle Gap Road, The Peak 山頂 中峽道24號

Rare find single detached house for lease
山頂獨立大屋，罕有放租，可租可售
5,750 s.f. (plus 12,000 s.f. garden)
\$380,000 incl. also for sale Open Offer

www.landscape.com/1376.htm | David Leung 梁先生 9199 0672

MID-LEVELS SALES

半山出售



Monmouth Place

東半山 萬信臺
9L Kennedy Road, Midlevels East
Newly renovated 3-bedroom flat on Kennedy Road
堅尼地道全新裝修三房住宅
1,072 s.f.
\$6,800,000

www.landscape.com/17937.htm | Eric Wong 黃先生 9740 3396



Morengo Court

東半山 昭達閣
23-25 Tai Hang Road, Midlevels East
Spacious apartment on Tai Hang Road with easy access to Causeway Bay
大坑道間隔寬敞住宅，鄰近銅鑼灣吃喝玩樂，十分方便
1,066 s.f.
\$8,500,000

www.landscape.com/13648.htm | Carman Szeto 司徒小姐 6183 8339



Suncrest Tower
 中半山 桂濤苑
 1-11 Monmouth Terrace, Midlevels Central
 4-bedroom including 2-ensuite apartment on fringe of Central business district
 中半山四房連兩套房住宅，鄰近中環商業區交通方便
 2,005 s.f.
\$13,000,000 also for lease \$52,000 incl.

www.landscape.com/19165.htm | Teresa Fung 馮小姐 9138 1621



Beauty Court
 西半山 雅苑
 82 Robinson Road, Midlevels West
 Harbour view flat with practical layout on Midlevels West
 西半山維港景住宅，間隔實用，可租可售
 1,771 s.f.
\$16,800,000 also for lease \$50,000 incl.

www.landscape.com/18014.htm | Sami Woo 胡小姐 9493 8275



Dragon Garden
 渣甸山 龍園
 1 Chun Fai Terrace, Jardine's Lookout
 Nicely decorated 3-bedroom apartment in convenient location with 3 car parks
 雅緻裝修三房住宅，位於渣甸山交通方便連三車位
 1,750 s.f.
\$14,800,000

www.landscape.com/16836.htm | Walker Lam 林先生 9551 1077



The Leighton Hill
 跑馬地 禮頓山
 2B Broadwood Road, Happy Valley
 Good sized 3-bedroom flat with full clubhouse facilities overlooking racecourse
 跑馬地三房住宅，屋苑設有完善會所設施，俯瞰馬場景觀
 1,482 s.f.
\$19,000,000

www.landscape.com/15602.htm | Sissy Li 李小姐 9642 6969



Butler Tower
 渣甸山 柏麗園
 1-5 Boyce Road, Jardine's Lookout
 Practical 4 bedrooms apartment in prime location of Jardine's Lookout
 渣甸山實用四房單位，地段尊貴
 1,650 s.f.
\$19,500,000

www.landscape.com/19200.htm | Carman Szeto 司徒小姐 6183 8339



Tavistock
 中半山 騰皇居
 10A Tregunter Path, Midlevels Central
 Quality 3-bedroom flat in prestigious location of Midlevels Central
 精緻三房住宅，位於中半山尊貴地段
 1,730 s.f.
\$20,000,000

www.landscape.com/17815.htm | Sissy Li 李小姐 9642 6969



Stubbs Villa 東半山 詩濤花園
 2 Shiu Fai Terrace, Midlevels East
 Spacious mid-rise in quiet neighbourhood with open city view
 間隔寬敞中密度單位，位處清幽地段，俯瞰開揚城市景觀，可租可售
 2,325 s.f.
\$21,000,000 also for lease \$68,000 incl.

www.landscape.com/18964.htm | Mark Mak 麥先生 6838 2929



United Mansion
 東半山 騰黃閣
 7 Shiu Fai Terrace, Midlevels East
 Spacious flat with practical layout in tranquil area
 間隔寬敞實用單位，環境清靜，景觀怡人
 2,300 s.f.
\$22,000,000

www.landscape.com/14752.htm | Stephen Chan 陳先生 9093 3381



9-10 Briar Avenue, Happy Valley 跑馬地 比雅道 9-10號
 Boutique low-rise apartment with private roof in quiet location
 精緻低密度住宅，配以私家天台，環境清靜
 2,000 s.f. (plus 1,600 s.f. roof)
\$22,000,000

www.landscape.com/8804.htm | Christine Chong 莊小姐 9648 6082



Clovelly Court
 中半山 嘉富麗苑
 12 May Road, Midlevels Central
 Spacious family flat with practical layout
 中半山豪華家庭式住宅，間隔實用
 1,881 s.f.
\$23,000,000

www.landscape.com/17350.htm | Eric Wong 黃先生 9740 3396



11 MacDonnell Road, Midlevels Central
 中半山 麥當勞道11號
 Nicely decorated modern apartment with high privacy
 精美現代裝修住宅，私隱度高，可租可售
 2,313 s.f.
\$23,000,000 also for lease \$60,000 incl.

www.landscape.com/18675.htm | Stella Lo 羅小姐 9809 8570



Butler Tower
 渣甸山 柏麗園
 1-5 Boyce Road, Jardine's Lookout
 Penthouse apartment with roof at tranquil neighbourhood
 渣甸山頂層連天台住宅，環境清幽怡人，可租可售
 1,650 s.f. (plus 1,306 s.f. roof)
\$23,000,000 also for lease \$70,000 incl.

www.landscape.com/13852.htm | Mary Li 李小姐 9011 6595

MID-LEVELS SALES



Dynasty Court
 中半山 帝景園
 23 Old Peak Road, Midlevels Central
 Prestigious apartment with excellent facilities
 中半山豪華尊貴住宅，配以完善住客會所設施
 1,970 s.f.
\$25,500,000

www.landscape.com/12888.htm | David Chan 陳先生 9238 2012



The Legend
 東半山 名門
 23 Tai Hang Drive, Midlevels East
 Brand new luxury flat with clubhouse
 全新豪華住宅，屋苑設有完善住客會所設施
 1,918 s.f.
\$26,000,000

www.landscape.com/12865.htm | Mark Mak 麥先生 6838 2929



6A Bowen Road, Midlevels Central
 中半山 寶雲道6A號
 Spacious 3-bedroom apartment on tree-lined Bowen Road
 寶雲道寬敞三房單位，綠樹圍蔭，可租可售
 2,220 s.f.
\$26,000,000 also for lease \$80,000 incl.

www.landscape.com/10495.htm | Mira To 杜小姐 9486 1566



Po Garden
 中半山 寶園
 9 Brewin Path, Midlevels Central
 Luxury apartment surrounded by lush greenery
 中半山豪華住宅，享受環迴的翠綠園景，可租可售
 2,576 s.f.
\$27,000,000 also for lease \$80,000 incl.

www.landscape.com/3310.htm | Walker Lam 林先生 9551 1077




Clement Court
 渣甸山 松風臺
 56-64 Mount Butler Road, Jardine's Lookout
 Colonial low-rise in tranquil neighbourhood
 低密度英式住宅，環境清幽怡人
 2,200 s.f.
\$28,000,000

www.landscape.com/18858.htm | Stephen Chan 陳先生 9093 3381




Evergreen Villa
 東半山 松柏新村
 43 Stubbs Road, Midlevels East
 Sought after 4-bedroom flat with brand new decoration
 東半山四房住宅，全新裝修，市面難求
 2,700 s.f.
\$28,000,000

www.landscape.com/14580.htm | Walker Lam 林先生 9551 1077




Pinewood Garden
 渣甸山 松峰閣
 39 Perkins Road, Jardine's Lookout
 Unique low-rise apartment with sizeable private roof
 精緻低密度住宅，配以巨型私家天台
 2,900 s.f. (plus 2,500 s.f. roof)
\$28,000,000

www.landscape.com/15099.htm | Teresa Lau 劉小姐 9080 6686



Hollywood Heights
 中半山 好利閣
 6 Old Peak Road, Midlevels Central
 High efficiency 4-bedroom apartment with 2 car parks easy access to Central
 中半山四房住宅，實用率高連兩車位鄰近中環交通方便
 2,700 s.f.
\$30,000,000

www.landscape.com/14809.htm | Teresa Lau 劉小姐 9080 6686



Suncrest Tower
 中半山 桂濤苑
 1-11 Monmouth Terrace, Midlevels Central
 Duplex penthouse with private roof in prime location
 中半山頂層複式單位連私家天台，地段尊貴
 3,413 s.f. (plus 229 s.f. terrace)
\$34,500,000

www.landscape.com/19121.htm | Carman Szeto 司徒小姐 6183 8339



Hillsborough Court 中半山 曉峰閣
 18 Old Peak Road, Midlevels Central
 Unique penthouse with tasteful decorations and garden terrace and roof
 中半山精緻住宅，配以品味裝修，連花園平台及天台
 2,200 s.f.
 (plus 1,000 s.f. roof and 1,016 s.f. terrace)
\$35,000,000

www.landscape.com/13019.htm | Teresa Lau 劉小姐 9080 6686



The Albany
 中半山 雅賓利大廈
 1 Albany Road, Midlevels Central
 Prestigious 2-bedroom apartment in prime location
 中半山豪華兩房住宅，地段尊貴
 1,755 s.f.
\$36,000,000

www.landscape.com/12416.htm | Stella Lo 羅小姐 9809 8570



The Colonnade
 東半山 嘉崙臺
 152 Tai Hang Road, Midlevels East
 High floor apartment overlooking Hong Kong Stadium
 東半山高層住宅，俯瞰香港大球場，可租可售
 2,256 s.f.
\$36,100,000 also for lease \$106,000 incl.

www.landscape.com/19051.htm | Walker Lam 林先生 9551 1077

MID-LEVELS SALES

半山
出售



Clovelly Court
 中半山 嘉富麗苑
 12 May Road, Midlevels Central
 High efficiency practical 4-bedroom flat in prime location
 實用率高四房單位，位處尊貴地段
 2,809 s.f.
\$42,000,000

www.landscape.com/16886.htm | Stephen Chan 陳先生 9093 3381



Trafalgar Court
 東半山 大寶閣
 70 Tai Hang Road, Midlevels East
 Huge practical harbour view 5-bedroom apartment close to Causeway Bay
 巨型維港景五房住宅，鄰近銅鑼灣，間隔實用
 3,008 s.f.
\$43,800,000

www.landscape.com/15093.htm | Sami Woo 胡小姐 9493 8275



Grenville House 中半山 嘉慧園
 1, 3 & 3A Magazine Gap Road, Midlevels Central
 Renowned huge apartment with 4 spacious bedrooms
 清雅裝修巨型四房單位，間隔寬敞，可租可售
 3,700 s.f.
\$65,000,000 also for lease \$130,000 incl.

www.landscape.com/18141.htm | Sami Woo 胡小姐 9493 8275



The Mayfair
 中半山 梅道1號
 1 May Road, Midlevels Central
 Exquisite apartment with spectacular harbour view
 設計精緻的單位，獨享壯麗的維港景色
 2,918 s.f.
\$66,000,000

www.landscape.com/19157.htm | Mark Mak 麥先生 6838 2929



May Tower
 中半山 梅苑
 5 May Road, Midlevels Central
 Spacious 4-ensuite apartment with high privacy
 寬敞四房單位，私隱度高，可租可售
 3,393 s.f.
\$68,000,000 also for lease \$120,000 incl.

www.landscape.com/18049.htm | David Chan 陳先生 9238 2012



21 Perkins Road, Jardine's Lookout
 渣甸山 白建時道21號
 Highly sought after single detached house in Jardine's Lookout
 渣甸山獨立大屋，市場罕有出售
 3,800 s.f.
 (plus 800 s.f. garden and 352 s.f. terrace)
\$98,000,000

www.landscape.com/15593.htm | Sissy Li 李小姐 9642 6969

MID-LEVELS LEASE

半山
出租



Grand Bowen
 中半山 寶雲殿
 11B Bowen Road, Midlevels Central
 Renovated 2-bedroom apartment in tree-lined neighbourhood
 全新裝修兩房住宅尊享綠樹圍蔭景觀
 1,541 s.f.
\$48,000 incl.

www.landscape.com/13662.htm | David Chan 陳先生 9238 2012



1 Po Shan Road, Midlevel West
 西半山 寶珊道1號
 Luxurious 3-bedroom apartment with clubhouse facilities on quiet Po Shan Road
 寶珊道豪華三房住宅連住客會所設施，環境寧靜
 1,332 s.f.
\$49,000 incl.

www.landscape.com/18925.htm | Walker Lam 林先生 9551 1077



Cavendish Heights
 渣甸山 嘉雲臺
 27-37 Perkins Road, Jardine's Lookout
 3-bedroom family apartment with garden view on Jardine's Lookout
 渣甸山家庭式三房住宅，尊享翠綠園景
 1,819 s.f.
\$50,000 incl.

www.landscape.com/18771.htm | Sissy Li 李小姐 9642 6969



Lincoln Court
 東半山 林肯大廈
 156 Tai Hang Road, Midlevels East
 Lovely colonial style mid-rise in tranquil location
 迷人英式低密度住宅，環境清幽怡人
 1,900 s.f.
\$65,000 incl.

www.landscape.com/10735.htm | Rowena Siu 蕭小姐 9348 4118



36B Kennedy Road, Midlevels Central
 中半山 堅尼地道36B號
 Exclusive large 4-bedroom flat with three ensuites on fringe of Central
 獨特巨型四房連三套房單位，位處中半山優越地段
 2,500 s.f.
\$68,000 incl.

www.landscape.com/19074.htm | Eric Wong 黃先生 9740 3396



Fontana Garden
 東半山 豪園
 1-25 Ka Ning Path, Midlevels East
 Huge 3-bedroom apartment on Tai Hang Road close to Causeway Bay
 大坑道巨型三房單位，鄰近銅鑼灣，吃喝玩樂十分方便
 3,300 s.f.
\$70,000

www.landscape.com/3236.htm | Mira To 杜小姐 9486 1566

MID-LEVELS LEASE



Century Tower

中半山 世紀大廈

1 Tregunter Path, Midlevels Central
Spacious apartment in prestigious location
中半山寬敞住宅，位處尊貴地段

2,565 s.f.
\$79,000 incl.

www.landscape.com/3759.htm | Eric Wong 黃先生 9740 3396



Broadwood Park

跑馬地 柏樂苑

38 Broadwood Road, Happy Valley
Practical layout flat with 3-ensuite facing
Hong Kong Stadium
間隔實用三套房單位，屋苑設有會所設施享大球場景

2,913 s.f.
\$80,000 incl.

www.landscape.com/18802.htm | Walker Lam 林先生 9551 1077



Taipan Court

東半山 大班閣

47B Stubbs Road, Midlevels East
Spacious 4-bedroom apartment with
unobstructed view
東半山寬敞四房單位，俯瞰一望無際開揚景觀

3,670 s.f.
\$80,000

www.landscape.com/331.htm | Yvonne Chang 鄭小姐 9088 4666



Po Garden

中半山 寶園

9 Brewin Path, Midlevels Central
Practical 3-bedroom apartment with
greenery view on fringe of Central
間隔實用三房住宅連翠綠景致，鄰近中環交通方便

2,572 s.f.
\$80,000 incl.

www.landscape.com/10909.htm | Yvonne Chang 鄭小姐 9088 4666



Evergreen Villa

東半山 松柏新村

43 Stubbs Road, Midlevels East
4-bedroom duplex in practical layout with
two ensuites
四房複式住宅，兩套房設計，間隔實用

3,700 s.f.
\$85,000 incl.

www.landscape.com/19041.htm | Carman Szeto 司徒小姐 6183 8339



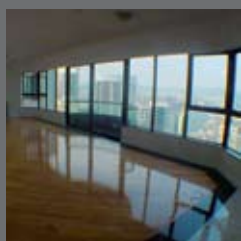
Evergreen Villa

東半山 松柏新村

43 Stubbs Road, Midlevels East
Spacious practical apartment with huge
balcony and private roof
間隔寬敞實用住宅連巨型陽臺及私家天台

2,560 s.f. (plus 2,000 s.f. roof)
\$88,000 incl.

www.landscape.com/18670.htm | David Chan 陳先生 9238 2012



Grand Bowen

中半山 寶雲殿

11B Bowen Road, Midlevels Central
Unique 4-bedroom apartment with
fantastic harbour view
精緻四房住宅享驚人的維港景觀

3,071 s.f.
\$89,000 incl.

www.landscape.com/8138.htm | Louis Wong 黃先生 9871 6828



May Tower

中半山 梅苑

7 May Road, Midlevels Central
Spacious apartment with newly renovated
kitchen and bathrooms
間隔寬敞住宅，配以全新裝修的廚房及浴室

2,850 s.f.
\$95,000 incl.

www.landscape.com/19015.htm | Carman Szeto 司徒小姐 6183 8339



Clovelly Court

中半山 嘉富麗苑

12 May Road, Midlevels Central
Huge 4-bedroom family apartment with
fantastic city view
巨型四房家庭式住宅，俯瞰驚人的城市景觀

2,809 s.f.
\$100,000

www.landscape.com/18747.htm | Mira To 杜小姐 9486 1566



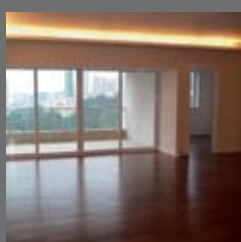
Century Tower

中半山 世紀大廈

1A Tregunter Path, Midlevels Central
Prestigious large 4-bedroom flat with
high privacy
尊貴巨型四房單位，私隱度高，可租可售

3,638 s.f.
\$105,000 incl. also for sale \$55,000,000

www.landscape.com/16669.htm | Stella Lo 羅小姐 9809 8570



Valley View 東半山 欣景台

4A-4D Wong Nai Chung Gap Road,
Midlevels East

Sought after huge mid-rise apartment with
meticulous decoration
巨型中密度住宅，配以一絲不苟的品味裝修，市面難求，
可租可售

2,400 s.f.
\$108,000 incl. also for sale \$31,000,000

www.landscape.com/18810.htm | Stephen Chan 陳先生 9093 3381



Bowen Mansion

中半山 寶雲大廈

7C Bowen Road, Midlevels Central
Spacious colonial apartment on fringe of
Central with huge balcony
中半山寬敞英式住宅連巨型陽臺，鄰近中環交通方便

3,500 s.f.
\$115,000 incl.

www.landscape.com/19209.htm | Teresa Lau 劉小姐 9080 6686

MID-LEVELS LEASE

半山
出租



Magazine Court 中半山 澄碧閣
5-7 Magazine Gap Road, Midlevels Central
Sought after 4-bedroom apartment on Magazine Gap Road with stunning harbour view
中半山罕有四房住宅，尊享一望無際維港景，市面難求

3,300 s.f.
\$120,000 incl.

www.landscape.com/18189.htm | Rowena Siu 蕭小姐 9348 4118



Monterey Court
渣甸山 白建時道47-49號
47-49 Perkins Road, Jardine's Lookout
Rare find penthouse in Jardine's Lookout with 2 large terraces
渣甸山罕有頂樓單位連兩個巨型平台

2,678 s.f. (plus 600 s.f. terrace)
\$120,000 incl.

www.landscape.com/17112.htm | Sami Woo 胡小姐 9493 8275



Eva Court
中半山 惠園
36 Macdonnell Road, Midlevels Central
Rare find huge apartment close to CBD
中半山巨型住宅，鄰近中環商業區，市場罕有

4,500 s.f.
\$160,000 incl.

www.landscape.com/11270.htm | Sissy Li 李小姐 9642 6969



Tregunter Tower
中半山 地利根德閣
14 Tregunter Path, Midlevels Central
Spacious 4-ensuite penthouse with private roof in well planned development
寬敞四套房頂樓連私家天台，屋苑管理完善，可租可售

6,100 s.f. (plus 1,100 s.f. roof)
\$180,000

www.landscape.com/18594.htm | Eric Wong 黃先生 9740 3396

SOUTHSIDE SALES

南區
出售



Regent Palisades
薄扶林 帝柏園
43 Bisney Road, Pokfulam
Designer decorated 3-bedroom low-rise
位於薄扶林設計師精心設計三房住宅

1,543 s.f.
\$11,000,000

www.landscape.com/15784.htm | Christine Chong 莊小姐 9648 6082



South Bay Garden
淺水灣 南灣花園
33 South Bay Close, Repulse Bay
3-bedroom flat in serene South Bay Close
三房住宅，位於寧靜的南灣坊

1,542 s.f.
\$13,500,000

www.landscape.com/15194.htm | Mark Mak 麥先生 6838 2929



Belleview Place
淺水灣 寶晶苑
93 Repulse Bay Road, Repulse Bay
Boutique duplex apartment with terrace near Repulse Bay beach
精緻複式住宅連平台，鄰近淺水灣海灘

1,846 s.f. (plus 125 s.f. terrace)
\$16,800,000

www.landscape.com/19147.htm | Christine Chong 莊小姐 9648 6082



Grand Garden
淺水灣 華景園
61 South Bay Road, Repulse Bay
3-bedroom sea view apartment with practical layout
淺水灣三房海景單位，間隔實用，可租可售

1,657 s.f.
\$17,500,000 also for lease \$55,000 incl.

www.landscape.com/18958.htm | Maria Cheung 張小姐 5182 8699



The Brentwood
淺水灣 蔚峰園
11 Repulse Bay Road, Repulse Bay
Exclusive sea view flat on upper Repulse Bay Road
獨特海景單位，位於淺水灣道，地段尊貴

1,556 s.f.
\$20,000,000

www.landscape.com/16004.htm | Stella Lo 羅小姐 9809 8570



Cypresswaver Villas
春坎角 柏濤小築
32 Cape Road, Chung Hom Kok
Renovated sea view duplex with private roof top
全新裝修海景複式住宅連私家天台

1,800 s.f. (plus 1,144 s.f. roof)
\$23,000,000

www.landscape.com/14540.htm | Mary Li 李小姐 9011 6595



Ruby Court
淺水灣 嘉麟閣
55 South Bay Road, Repulse Bay
Nicely decorated flat with full sea view in prestigious development
良好裝修海景住宅，座落淺水灣高貴地段，可租可售

1,780 s.f.
\$24,000,000 also for lease \$65,000 incl.

www.landscape.com/15680.htm | Rowena Siu 蕭小姐 9348 4118



South Bay Villas
淺水灣 南灣新村
4 South Bay Close, Repulse Bay
Renovated spacious apartment on exclusive South Bay Close
南灣坊住宅，寬敞實用連裝修

2,300 s.f.
\$25,000,000

www.landscape.com/11473.htm | Rowena Siu 蕭小姐 9348 4118

SOUTHSIDE SALES

南區
出售



Ridge Court

淺水灣 冠園

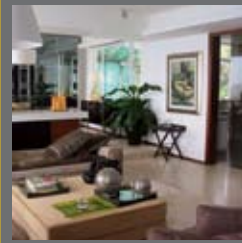
21A-21D Repulse Bay Road, Repulse Bay
Hillside apartment with sweeping view of Deep Water Bay
淺水灣半山住宅，尊享廣闊的深水灣景觀，可租可售

2,300 s.f.

\$30,000,000 also for lease \$80,000 incl.

www.landscape.com/10243.htm

Carman Szeto 司徒小姐 6183 8339



Full seaview apartment in Tai Tam

大潭 全海景住宅

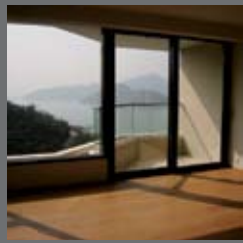
Mid-rise apartment with nice decor overlooking the scenic Tai Tam Bay
大潭中密度住宅，配以雅緻裝修，俯瞰大潭灣一望無際的景色

2,500 s.f.

\$33,000,000

www.landscape.com/18959.htm

Christine Chong 莊小姐 9648 6082



Belgravia

淺水灣 南灣道57號

57 South Bay Road, Repulse Bay
Newly renovated development on South Bay Road with brand new decoration
南灣道全新住宅配以全新裝修，可租可售

2,390 s.f.

\$36,000,000 also for lease \$85,000 incl.

www.landscape.com/18804.htm

Sami Woo 胡小姐 9493 8275



Monte Verde

淺水灣 南山別墅

41 Repulse Bay Road, Repulse Bay
Sought after Repulse Bay apartment with practical layout
淺水灣間隔實用單位，罕有出售

2,400 s.f.

\$36,000,000

www.landscape.com/11806.htm

Stella Lo 羅小姐 9809 8570



Stanley Court 赤柱 海灣園

9 Stanley Mound Road, Stanley
Resort-style townhouse with private garden close to beach
渡假式排屋連私家花園，鄰近海灘，可租可售

2,889 s.f.

(plus 667 s.f. roof and 825 s.f. garden)

\$38,000,000 also for lease \$130,000

www.landscape.com/18096.htm

Louis Wong 黃先生 9871 6828



The Redhill Peninsula

大潭 紅山半島

18 Pak Pat Shan Road, Tai Tam
Spacious and practical sea view house with garden

寬敞海景大屋連花園，間隔實用，可租可售

2,672 s.f. (plus 842 s.f. garden)

\$41,000,000 also for lease \$95,000 incl.

www.landscape.com/15271.htm

Christine Chong 莊小姐 9648 6082



Hillgrove 春坎角 壁如花園

18 Cape Drive, Chung Hom Kok
Practical sea view garden townhouse in tranquil location
間隔實用海景花園排屋，環境寧靜

3,000 s.f.

(plus 895 s.f. roof and 700 s.f. garden)

\$48,000,000

www.landscape.com/18930.htm

Stella Lo 羅小姐 9809 8570



Park Place

淺水灣 雅柏苑

7 Tai Tam Reservoir Road, Repulse Bay
Prestigious apartment with distant harbour view and country park view

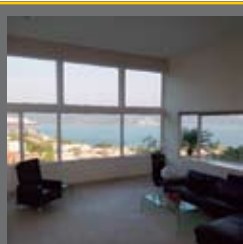
淺水灣維港景住宅，地段尊貴，享郊野公園景

2,355 s.f.

\$50,000,000

www.landscape.com/17945.htm

Stephen Chan 陳先生 9093 3381



Stanley Knoll 赤柱 赤柱村道42號

42 Stanley Village Road, Stanley
4-bedroom townhouse with garden and facilities in quiet neighbourhood
赤柱四房排屋連花園及住客會所設施，環境清幽怡人

2,574 s.f.

(plus 1,009 s.f. garden and 500 s.f. roof)

\$51,000,000

www.landscape.com/18093.htm

Louis Wong 黃先生 9871 6828



The Somerset

淺水灣 怡峰

67 Repulse Bay Road, Repulse Bay
Popular high-ceilinged duplex with Deep Water Bay sea view

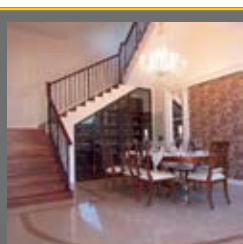
受歡迎高樓底複式住宅，尊享深水灣海景，可租可售

3,099 s.f.

\$55,000,000 also for lease \$130,000 incl.

www.landscape.com/13274.htm

Stephen Chan 陳先生 9093 3381



Bellevue Place 淺水灣 寶晶苑

93 Repulse Bay Road, Repulse Bay
Luxurious seaview townhouse with private garage
豪華海景排屋連私家車房，可租可售

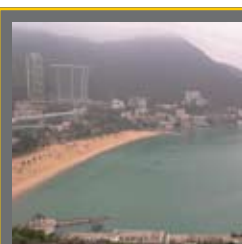
3,619 s.f.

(plus 600 s.f. roof and 300 s.f. terrace)

\$58,000,000 also for lease \$150,000 incl.

www.landscape.com/18963.htm

Teresa Fung 馮小姐 9138 1621



The Beachfront 淺水灣 壁池

7 Bellevue Drive, Repulse Bay

Repulse Bay townhouse with picturesque views
淺水灣排屋享別具一格的景觀

3,047 s.f.

(plus 285 s.f. garden and 185 s.f. terrace)

\$75,000,000

www.landscape.com/14469.htm

David Leung 梁先生 9199 0672

SOUTHSIDE SALES

南區
出售



Le Palais
大潭 皇府灣
8 Pak Pat Shan Road, Tai Tam
Luxurious 4-bedroom garden house with sweeping sea view
豪華四房花園大屋獨享廣闊的海景
4,372 s.f. (plus 800 s.f. garden)
\$85,000,000

www.landscape.com/13071.htm | Teresa Fung 馮小姐 9138 1621



Turtle Cove
大潭 龜背灣
60 Tai Tam Road, Tai Tam
Rare find Tai Tam waterfront townhouse with picturesque view
大潭海濱排屋尊享別具一格的景觀，市場罕有
4,300 s.f.
\$110,000,000

www.landscape.com/14417.htm | David Leung 梁先生 9199 0672

SOUTHSIDE LEASE

南區
出租



South Bay Towers
淺水灣 南灣大廈
59 South Bay Road, Repulse Bay
Sea view high-floor boutique 2-bedroom apartment with facilities
精緻高層海景兩房住宅，設有住客會所設施
1,433 s.f.
\$36,000 incl.

www.landscape.com/14190.htm | Teresa Fung 馮小姐 9138 1621



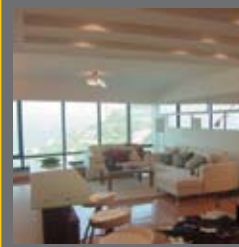
6-8 Ching Sau Lane, Chung Hom Kok
春坎角 靜修里6-8號
Low-rise apartment with huge balcony
春坎角低密度住宅配巨型陽臺，可租可售
2,000 s.f.
\$58,000 incl. also for sale \$20,000,000

www.landscape.com/11342.htm | Eric Wong 黃先生 9740 3396



Pak Villa
壽臣山 碧園
41 Shouson Hill Road, Shouson Hill
Low-rise in spacious layout with greenery view in quiet Shouson Hill
壽臣山低密度翠綠園景住宅，環境寧靜，間隔寬敞
2,224 s.f.
\$70,000 incl.

www.landscape.com/19054.htm | Mark Mak 麥先生 6838 2929



La Mer
薄扶林 浪頤居
71 Bisney Road, Pokfulam
Modern waterfront low-rise in tranquil area of Pokfulam
時尚海濱低密度住宅，位於薄扶林寧靜地區，可租可售
2,567 s.f.
\$70,000 incl. also for sale Open Offer

www.landscape.com/18835.htm | Rowena Siu 蕭小姐 9348 4118



Celestial Garden
淺水灣 詩禮花園
5 Repulse Bay Road, Repulse Bay
Rare find spacious 4-bedroom flat on upper Repulse Bay Road
淺水灣道寬敞四房單位，市場罕有
2,363 s.f.
\$75,000 incl.

www.landscape.com/16101.htm | Sissy Li 李小姐 9642 6969



39 Shouson Hill Road, Shouson Hill
壽臣山 壽臣山道39號
Newly decorated 3-bedroom apartment in colonial low-rise
全新裝修低密度英式三房住宅
2,450 s.f.
\$78,000

www.landscape.com/7410.htm | Mark Mak 麥先生 6838 2929



Park Place
淺水灣 雅柏苑
7 Tai Tam Reservoir Road, Repulse Bay
Conveniently located harbour view flat in spacious layout
淺水灣維港景住宅，間隔寬敞實用，地點優越
2,288 s.f.
\$80,000

www.landscape.com/19111.htm | Rowena Siu 蕭小姐 9348 4118



Gulestan
淺水灣 淺水灣道125號
125 Repulse Bay Road, Repulse Bay
Colonial style apartment at tranquil location with sea view
淺水灣英式海景單位，地段尊貴
2,500 s.f.
\$80,000

www.landscape.com/18942.htm | Mira To 杜小姐 9486 1566



Carmina Place
深水灣 嘉名苑
7-9 Deep Water Bay Drive, Deep Water Bay
Newly renovated 4-bedroom practical apartment with green view
全新裝修四房住宅，享翠綠園景，間隔實用
2,628 s.f.
\$90,000 incl.

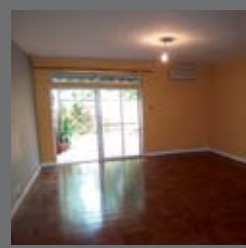
www.landscape.com/18299.htm | David Chan 陳先生 9238 2012



Ventura Villa
春坎角 華慧苑
27 Ching Sau Lane, Chung Hom Kok
Tastefully decorated townhouse with private terrace in quiet enclave
春坎角品味裝修排屋連私家平台，環境清幽寧靜
2,400 s.f. (plus 400 s.f. terrace)
\$90,000 also for sale Open Offer

www.landscape.com/14430.htm | Mary Li 李小姐 9011 6595

SOUTHSIDE LEASE



Ann Garden

壽臣山 安苑

29 Shouson Hill Road, Shouson Hill
Charming low-rise apartment with private garden in tranquil neighbourhood
迷人低密度住宅連私家花園，環境清幽怡人

2,500 s.f. (plus 200 s.f. garden)
\$100,000 incl.

www.landscape.com/18644.htm

Mira To 杜小姐 9486 1566

Carriana Sassoon 薄扶林 沙宣道41號



41 Sassoon Road, Pokfulam

Rare find sea view townhouse with private swimming pool
薄扶林罕有海景排屋連私家泳池

3,000 s.f.
(plus 971 s.f. roof and 780 s.f. garden)
\$110,000 incl.

www.landscape.com/19180.htm

Yvonne Chang 鄭小姐 9088 4666



6 Headland Road, Repulse Bay

淺水灣 赫蘭道6號

Rare find superb duplex apartment in prestigious location
淺水灣華麗複式住宅，地段尊貴，罕有放租

2,800 s.f.
\$110,000 incl.

www.landscape.com/5055.htm

Teresa Fung 馮小姐 9138 1621

1 Shouson Hill Road East, Shouson Hill



壽臣山 壽臣山道東1號

Townhouse with private garden in lush green neighbourhood
壽臣山排屋連私家花園，享翠綠園景

4,062 s.f.
(plus 817 s.f. roof and 80 s.f. garden)
\$128,000

www.landscape.com/18271.htm

Teresa Lau 劉小姐 9080 6686



Las Pinadas 壽臣山 朗松居

33 Shouson Hill Road, Shouson Hill
Popular townhouse in Shouson Hill with full clubhouse facilities
壽臣山受歡迎排屋，配完善住客會所設施

3,400 s.f.
(plus 773 s.f. roof and 399 s.f. garden)
\$135,000 incl.

www.landscape.com/19032.htm

Sami Woo 胡小姐 9493 8275



Burnside Villa

淺水灣 濱景園

9 South Bay Road, Repulse Bay
4-bedroom townhouse close to Repulse Bay Beach
淺水灣四房排屋，鄰近淺水灣海灘

2,800 s.f.
\$150,000 incl.

www.landscape.com/11139.htm

Mary Li 李小姐 9011 6595



South Bay Towers

淺水灣 南灣大廈

59 South Bay Road, Repulse Bay
Rare find full sea view apartment in quiet location of Repulse Bay
罕有全海景相連單位，位於寧靜的淺水灣區，可租可售

4,171 s.f.
\$150,000 also for sale \$70,000,000

www.landscape.com/8838.htm

Christine Chong 莊小姐 9648 6082



5 Headland Road, Repulse Bay

淺水灣 赫蘭道5號

Rare low-rise 4-bedroom garden flat with sea view in gated neighbourhood
罕有低密度四房住宅連海景，環境清幽怡人

3,200 s.f. (plus 2,138 s.f. garden)
\$165,000

www.landscape.com/18604.htm

Yvonne Chang 鄭小姐 9088 4666



Le Palais

大潭 皇府灣

8 Pak Pat Shan Road, Tai Tam
Luxurious townhouse with stunning sea view
大潭豪華排屋，享受廣闊海景

4,365 s.f. (plus 1,735 s.f. garden)
\$170,000 incl.

www.landscape.com/19168.htm

David Chan 陳先生 9238 2012



Carmelia

赤柱 赤柱村道60號

60 Stanley Village Road, Stanley
Huge colonial house with front yard and private garden
赤柱巨型英式大屋，連前院及私家花園

5,200 s.f. (plus 1,891 s.f. garden)
\$210,000 incl.

www.landscape.com/8783.htm

Louis Wong 黃先生 9871 6828



Landscape Realty Limited C-018733

a member of Landscape Surveyors Ltd

Tel: 852-2866 0022 Fax: 852-2866 0015

Email: info@landscape.com Website: www.landscape.com

Unit 3106, 31/F, Hopewell Centre,
183 Queen's Road East, Wanchai, Hong Kong

The information, text, photos, analyses and projections contained herein are provided solely for the convenience of prospective clients and no warranty or representation as to their accuracy, correctness or completeness is made by Landscape Surveyors Limited, Landscape Realty Limited or the owners, none of whom shall have any liability or obligation with respect thereto. Interested parties should rely on their own investigations, interpretations and analyses in connection with the purchase or letting thereof.

Information has been provided to us by sources deemed reliable, but no warranty or representation is made as to its accuracy, correctness or completeness. These offerings are made subject to contract, correction of errors, omissions, prior sale or lease, change of price or terms or withdrawal from the market without notice. The contents of The Key are for reference only and do not constitute all or any part of a contract.

Copyright 2009